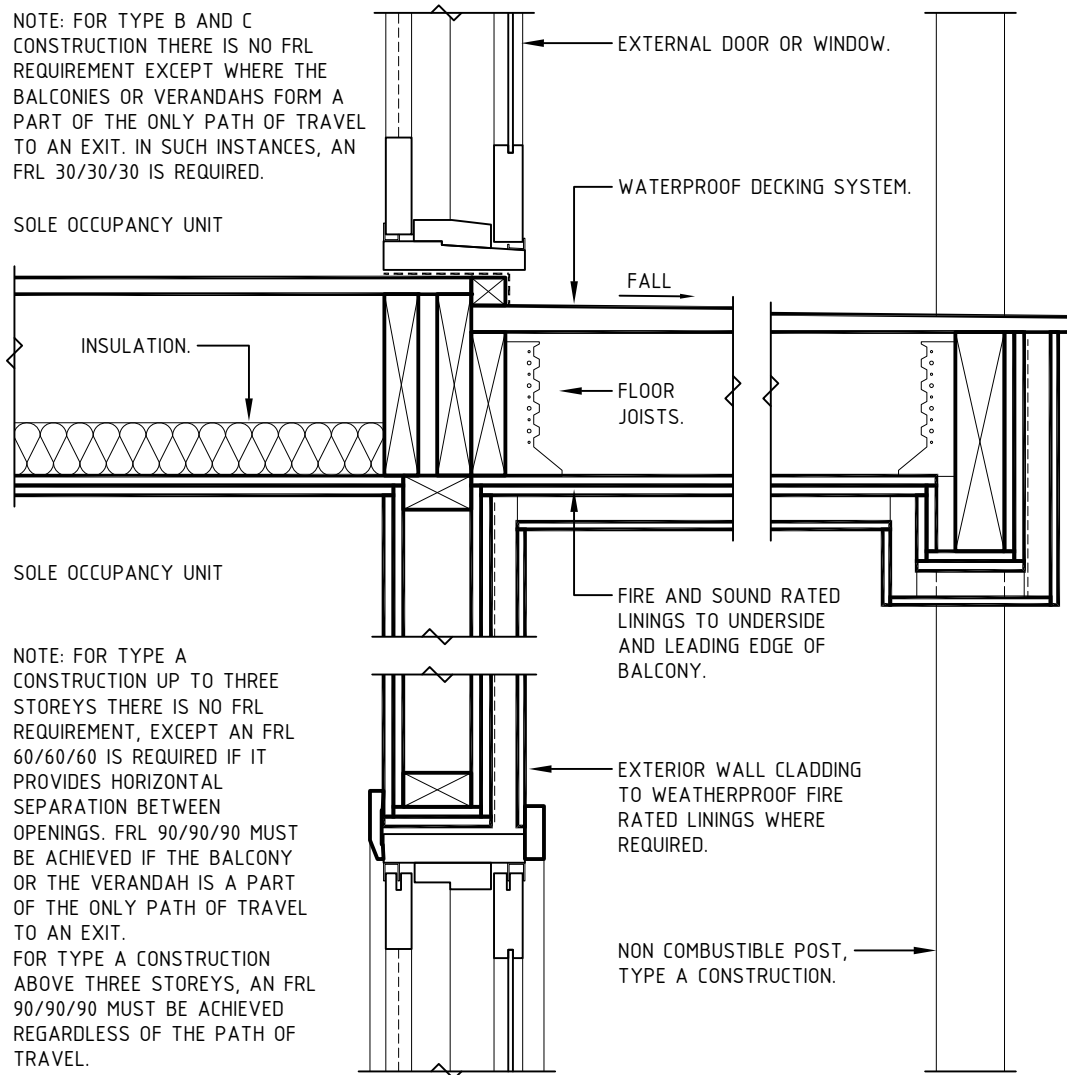


NOTE: FOR TYPE B AND C CONSTRUCTION THERE IS NO FRL REQUIREMENT EXCEPT WHERE THE BALCONIES OR VERANDAHS FORM A PART OF THE ONLY PATH OF TRAVEL TO AN EXIT. IN SUCH INSTANCES, AN FRL 30/30/30 IS REQUIRED.

SOLE OCCUPANCY UNIT



NOTE: FOR TYPE A CONSTRUCTION UP TO THREE STOREYS THERE IS NO FRL REQUIREMENT, EXCEPT AN FRL 60/60/60 IS REQUIRED IF IT PROVIDES HORIZONTAL SEPARATION BETWEEN OPENINGS. FRL 90/90/90 MUST BE ACHIEVED IF THE BALCONY OR THE VERANDAH IS A PART OF THE ONLY PATH OF TRAVEL TO AN EXIT. FOR TYPE A CONSTRUCTION ABOVE THREE STOREYS, AN FRL 90/90/90 MUST BE ACHIEVED REGARDLESS OF THE PATH OF TRAVEL.

SECTION DETAIL - VERTICAL SEPARATION IN EXTERNAL WALLS TO PROTECT OPENINGS FROM FIRE FD0059A



Researcher:

Timber Development Association (NSW)

© 2014 Forest and Wood
Products Australia Limited.
All rights reserved.

These materials are published under the
brand WoodSolutions by FWPA.

IMPORTANT NOTICE

The work IN ITS ORIGINAL STATE is copyright and protected under the terms of the Copyright Act 1968.

Permission is granted to reproduce or modify the contents of this document in whole or in part, provided all reference to FWPA, WoodSolutions & Timber Development Association (NSW) is REMOVED.

Forest and Wood Products Australia Limited and WoodSolutions Australia and all persons associated with them (FWPA) as well as any other contributors make no representations or give any warranty regarding the use, suitability, validity, accuracy, completeness, currency or reliability of the information, including any opinion or advice, contained in this document.

To the maximum extent permitted by law, FWPA excludes all liability in contract, tort (including negligence), or otherwise for any injury, loss or damage whatsoever (whether direct, indirect, special or consequential) arising out of or in connection with use or reliance on this document.

DETAIL REFERENCE NO.

FD0059A

REVISION STATUS

REV A / 01-06-2014 / MS
Original release.

SCALE

1:10 ON A4 SHEET